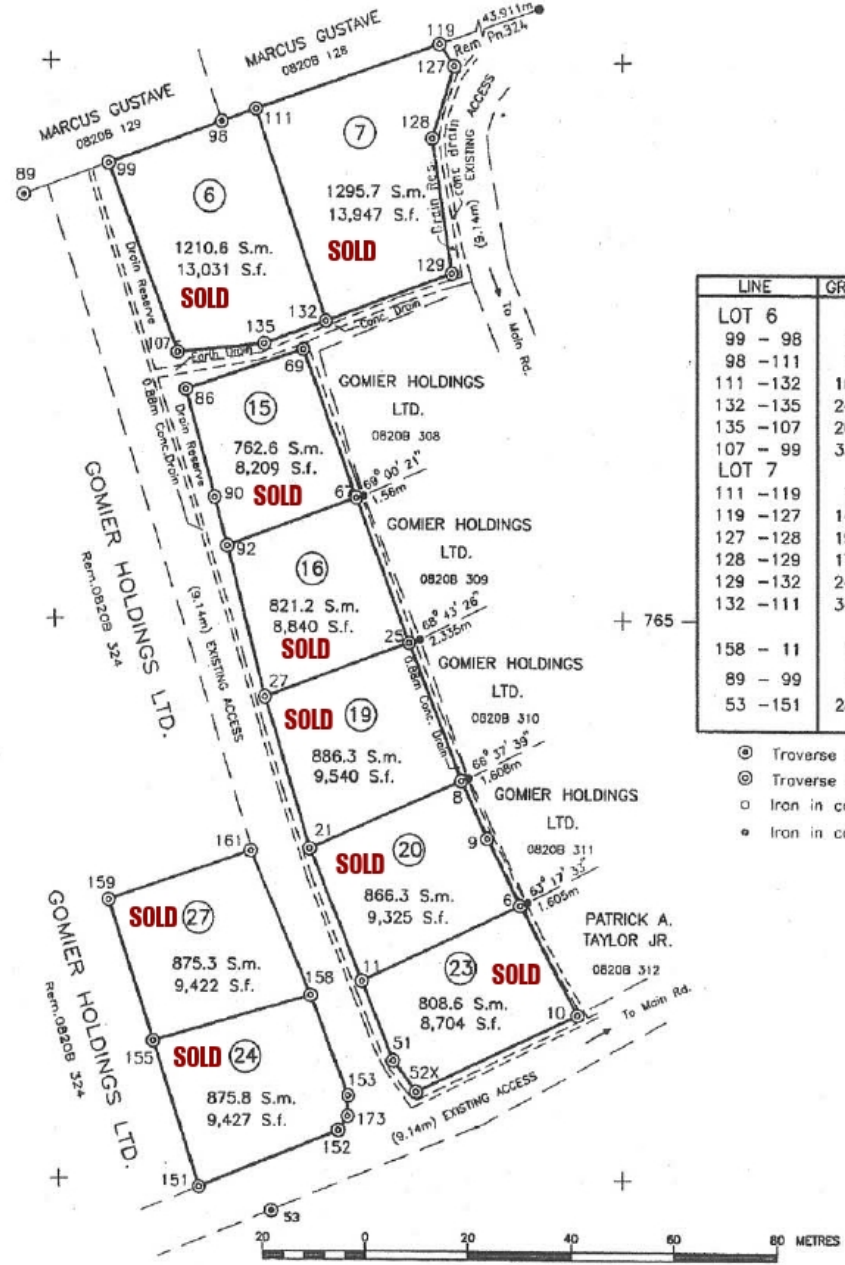
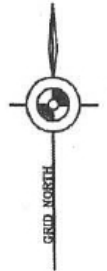


CERTIFIED A TRUE COPY
 16 Feb 2007
 RECORD NO. SM/12007
 for CHIEF SURVEYOR

E508 240m

350

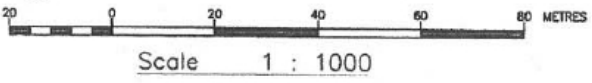


MEMO.
 Survey was executed between November 5th & December 10th, 2006.
 Instruments used were: a Nikon DTM 520 Total Station and a 30 metre Offset Tape.
 Reference was made to Plans L.885, L.1011 & L.1020 from which grid data was adopted
 D.C.A. Approval No. 1391/03
 Survey currently forms a part of Parcel 0820B 324.

Stanislaus Auguste
 Stanislaus Auguste
 Lic. Land Surveyor

CASTRIES ST. LUCIA
 DRAWING No: L1051R
 DRAWN By: *Samuel...*
 SURVEYED By: *Stanislaus Auguste*
 Lic. Land Surveyor
 DATE December 27th, 2006

N1520 660m



TRAVERSE

LINE	GRID BEARING	DISTANCE	
		metres	feet
LOT 6			
99 - 98	70 06 51	23.21	76.15
98 - 111	70 47 02	7.05	23.14
111 - 132	161 30 06	41.97	137.68
132 - 135	249 56 12	12.62	41.40
135 - 107	264 30 16	16.92	55.51
107 - 99	339 43 45	37.88	124.27
LOT 7			
111 - 119	70 47 38	37.37	122.61
119 - 127	145 06 19	4.98	16.34
127 - 128	197 28 59	14.24	46.72
128 - 129	171 30 16	25.69	84.30
129 - 132	249 40 49	25.95	85.14
132 - 111	341 30 06	41.97	137.68
158 - 11	74 37 06	10.36	34.00
89 - 99	70 07 23	17.41	57.12
53 - 151	287 11 07	14.87	48.77

- ⊙ Traverse station, iron in concrete found
- ⊙ Traverse station, iron in concrete put
- Iron in concrete put
- Iron in concrete found

TRAVERSE

LINE	GRID BEARING	DISTANCE	
		metres	feet
LOT 24			
151 - 155	342 07 53	28.59	93.80
155 - 158	74 20 58	32.03	105.08
158 - 153	158 52 34	20.11	65.99
153 - 173	181 59 40	3.83	12.58
173 - 152	214 43 01	3.23	10.61
152 - 151	248 48 37	29.32	96.18
LOT 27			
155 - 159	342 07 53	27.79	91.16
159 - 161	71 32 21	29.34	96.24
161 - 158	156 55 29	29.45	96.61
158 - 155	254 20 58	32.03	105.08
LOT 23			
11 - 51	157 52 57	16.13	52.90
51 - 52X	142 36 13	7.31	23.98
52X - 10	65 13 08	34.45	113.02
10 - 6	331 41 05	23.27	76.36
6 - 11	245 14 34	33.84	111.04
LOT 20			
11 - 6	65 14 34	33.84	111.04
6 - 9	332 58 13	14.13	46.35
9 - 8	335 19 47	11.92	39.10
8 - 21	246 32 08	32.07	105.21
21 - 11	157 56 08	26.80	87.91
LOT 19			
8 - 25	338 43 52	27.78	91.14
25 - 27	249 55 58	29.75	97.61
27 - 21	163 09 53	29.73	97.55
21 - 8	66 32 07	32.07	105.21
LOT 16			
25 - 67	339 35 32	29.13	95.57
67 - 92	249 55 47	26.63	87.38
92 - 27	165 42 16	29.28	96.05
27 - 25	69 55 58	29.75	97.61
LOT 15			
67 - 69	340 04 02	29.80	97.76
69 - 86	251 27 30	23.99	78.70
86 - 90	165 02 44	21.07	69.12
90 - 92	165 02 44	9.49	31.14
92 - 67	69 55 47	26.63	87.38

Plan Showing
 survey of nine (9) lots at MOUNT LE BLANC
 Quarter of LABORIE
 made at the instance of
 GOMIER HOLDINGS LTD.