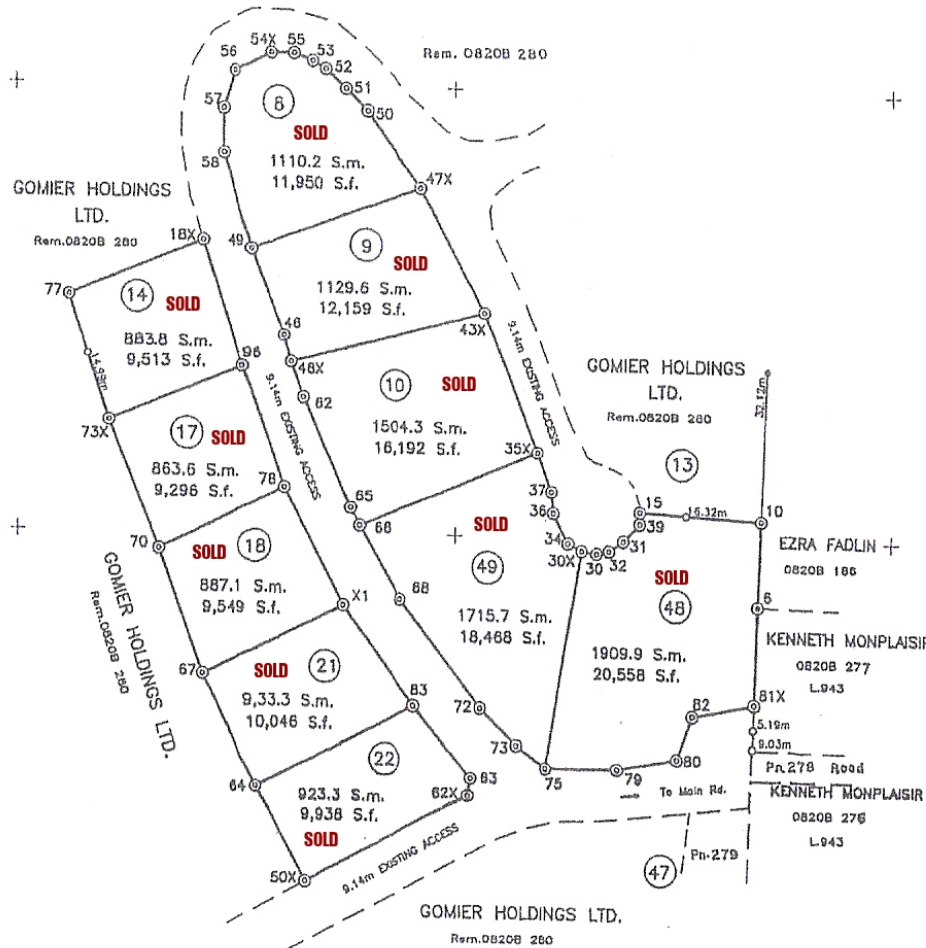


E508 280m

375

470

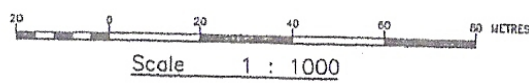
TRAVERSE



LINE	GRID BEARING	DISTANCE	Metres	Foot
LOT 8				
49 - 47X	70° 19' 13"		39.16	126.47
47X - 50	324 23 50		19.84	65.09
50 - 51	314 45 46		6.41	21.04
51 - 52	311 41 26		5.93	19.46
52 - 53	299 30 23		3.31	10.87
53 - 55	290 33 22		4.27	14.02
55 - 54X	270 27 03		5.07	16.55
54X - 56	243 27 44		8.58	28.14
56 - 57	198 52 37		8.15	26.73
57 - 58	179 21 57		9.43	30.92
58 - 49	163 46 39		20.82	68.32
LOT 9				
46 - 46X	165 15 45		5.99	19.66
46X - 43X	74 43 40		43.59	143.02
43X - 47X	332 14 35		29.54	96.93
47X - 49	250 19 13		39.16	126.47
49 - 46	159 16 21		19.93	65.40
LOT 10				
43X - 46X	254 43 40		43.59	143.02
46X - 62	160 27 22		8.09	26.54
62 - 65	155 57 40		25.59	83.97
65 - 66	152 08 08		4.15	13.62
66 - 35X	67 21 31		41.85	137.31
35X - 43X	336 47 39		32.22	105.72
LOT 49				
30X - 34	297 34 58		3.26	10.77
34 - 36	333 09 23		7.11	23.33
36 - 37	355 37 16		4.61	15.13
37 - 35X	339 15 30		8.86	29.07
35X - 66	247 21 31		41.85	137.31
66 - 68	149 59 29		17.69	58.02
68 - 72	142 30 51		28.46	93.36
72 - 73	133 41 12		10.62	35.51
73 - 75	126 17 20		8.10	26.59
75 - 30X	9 38 27		46.18	151.50
LOT 48				
6 - 10	1 55 41		17.91	58.76
10 - 15	273 05 14		26.39	86.56
15 - 39	179 20 36		2.49	8.18
39 - 31	224 10 06		5.05	16.57
31 - 32	235 10 34		3.76	12.35
32 - 30	258 41 19		2.66	9.39
30 - 30X	279 29 46		3.31	10.86
30X - 75	189 38 27		48.18	151.50
75 - 79	89 30 02		15.80	51.83
79 - 80	79 58 56		13.15	43.15
80 - 82	20 12 33		9.58	31.42
82 - 81X	79 07 02		13.65	44.83
81X - 6	1 54 33		20.49	67.22
LOT 14				
96 - 73X	247 03 09		31.13	102.12
73X - 77	342 28 03		29.09	95.44
77 - 18X	67 30 18		31.29	102.65
18X - 96	162 50 12		28.33	92.95
LOT 17				
96 - 73X	247 03 09		31.13	102.12
73X - 70	158 07 32		29.09	95.44
70 - 78	63 55 30		30.11	98.80
78 - 96	340 22 13		27.47	90.12
LOT 18				
78 - X1	152 05 16		27.77	91.11
X1 - 67	244 16 58		34.04	111.69
67 - 70	340 14 08		27.71	90.92
70 - 78	63 55 30		30.11	98.80
LOT 21				
X1 - 83	143 30 20		25.80	84.66
83 - 64	243 26 15		38.69	126.95
64 - 67	334 02 01		25.94	85.10
67 - X1	64 16 58		34.04	111.69
LOT 22				
83 - 63	139 50 01		19.29	63.27
63 - 62X	188 56 51		3.97	13.03
62X - 50X	241 33 37		40.23	132.00
50X - 64	331 40 32		23.29	76.41
64 - 83	63 26 15		38.69	126.95
96 - 46	53 15 53		11.33	37.18

MEMO.
 Survey was executed between October 30th & November 20th, 2005
 Instruments used were: a Nikon DTM 520 Total Station and a 30 metre Offset Tape.
 Reference was made to Plans L.943 & L.884 from which grid co ordinates were adopted.
 D.C.A. Approval No. 1391/2003
 Survey currently forms a part of 0820B 280

Stanislaus Auguste
 STANISLAUS AUGUSTE
 Lic. Land Surveyor



CERTIFIED A TRUE COPY
Stanislaus Auguste
 16 Jan 2006 9/1587/2005
 RECORD NO. 9/1587/2005
 CHIEF SURVEYOR

CASTRIES ST. LUCIA
 Plan Showing
 survey of ten (10) lots at MOUNT LE BLANC
 Quarter of LABORIE
 made at the instance of
 GOMIER HOLDINGS LTD.

- ⊙ Traverse station, iron in concrete found
- ⊙ Traverse station, iron in concrete put
- ⊘ Traverse station, wood peg
- Iron in concrete put
- Iron in concrete found

DATE November 24th, 2005